



Does the context matter?

Exploring the relationship between
school and home location

Ferran Casas, Mònica González, Dolors Navarro,
Gemma Crous , Joan Romans and Merche Martín

www.isciweb.org

Universitat de Girona



Our Promise to Youth

Introduction (I)

- Living in rural or urban contexts seems to have **different impact** on children's and adolescents' subjective well-being (SWB) in Spain. In a Spanish representative sample (Children's Worlds 1st wave), 12-year-olds attending semi-urban located schools displayed significantly **higher SWB** than these children attending urban or rural schools.
- Statistical significant differences have also been identified in the evaluation that children of different ages make about different school-related aspects, such as **satisfaction with the school experience**, according to the context where the school is located.



Our Promise to Youth

Introduction (II)

- In an on-going longitudinal study (non-representative Catalan sample), **8-year-olds attending rural schools display higher life satisfaction scores** compared to children of the same age belonging to semi-urban or urban schools, while the most satisfied with the school experience at the ages of 10 and 12 were those attending semi-urban schools.
- However, **not all children attending a particular school live in the same location where the school is**. In some cases, the context is different, for instance, when a child living in a rural environment attends an urban school.



Sampling

- A widely used classification in Spain divides settlements into three categories: **rural**, **semi-urban** and **urban**. According to the Spanish National Statistics Office, settlements up to 2,000 people are considered rural, from 2,001 to 10,000 semi-urban and with more than 10,000 inhabitants urban.
- There are 947 municipalities in Catalonia; 594 are rural, which altogether have 4.6% of the inhabitants; 232 are semi-urban, with 14.07% of the inhabitants; and 121 are urban, with 81.31% of the inhabitants.

Analysis

- 8 year-olds are excluded from the analysis of the instruments to assess SWB, **10 and 12 year-olds'** responses have been considered **altogether** in these cases.
- For the other items, responses of 8, 10 and 12 have been considered altogether.
- Means and percentages, and test of significance as well, have been calculated through **complex sampling analysis**.

www.isciweb.org

Universitat de Girona



Our Promise to Youth

Distribution of the sample by school context and home location (number of cases) (10 & 12 year-olds)

		HOME LOCATION			TOTAL
		RURAL	SEMI-URBAN	URBAN	
SCHOOL CONTEXT	RURAL	212	40	11	263
	SEMI-URBAN	114	509	33	656
	URBAN	39	56	1,750	1,845
TOTAL		365	605	1,794	2,764

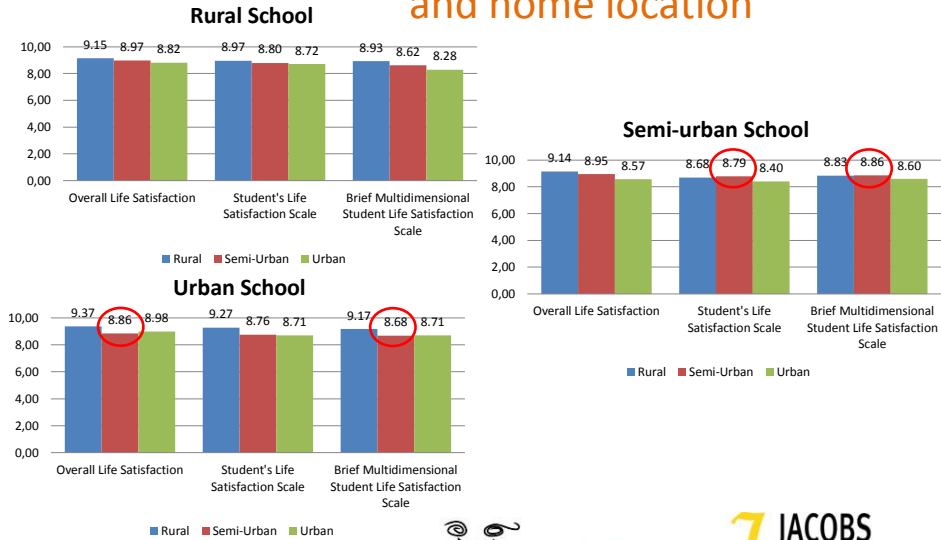
www.isciweb.org

Universitat de Girona



Our Promise to Youth

OLS, SLSS and BMLSS by school context and home location



www.isciweb.org

Universitat de Girona



Our Promise to Youth

OLS by school context and home location

Statistical significant differences

Rural school

Home Location	Mean	95% Confidence Interval		Contrast of hypothesis			
		Lower	Upper	Contrast value	t	df	Sig.
Rural	9.15	9.08	9.21	9.15	-.071	4	.947
Semi-urban	8.97	8.85	9.10	9.15	-3.970	4	.017
Urban	8.82	8.42	9.22	9.15	-2.287	4	.084

Urban school

Home Location	Mean	95% Confidence Interval		Contrast of hypothesis			
		Lower	Upper	Contrast value	t	df	Sig.
Rural	9.36	9.22	9.50	8.98	7.787	4	.001
Semi-urban	8.85	8.38	9.32	8.98	-.743	4	.499
Urban	8.98	8.88	9.08	8.98	.045	4	.966

www.isciweb.org

Universitat de Girona



Our Promise to Youth

SLSS by school context and home location

Statistical significant differences

Rural school							
Home Location	Mean	95% Confidence Interval		Contrast of hypothesis			
		Lower	Upper	Contrast value	t	df	Sig.
Rural	8.97	8.86	9.07	8.97	-.066	4	.951
Semi-urban	8.80	8.68	8.92	8.97	-3.988	4	.016
Urban	8.72	8.28	9.16	8.97	-1.567	4	.192

Urban school							
Home Location	Mean	95% Confidence Interval		Contrast of hypothesis			
		Lower	Upper	Contrast value	t	df	Sig.
Rural	9.27	8.82	9.71	8.71	3.494	4	.025
Semi-urban	8.76	7.89	9.62	8.71	.145	4	.891
Urban	8.71	8.62	8.81	8.71	.039	4	.971

www.isciweb.org

Universitat de Girona

ERIDI QV
Equip de Recerca en Intervenció, Avaluació i Desenvolupament Educatiu i Social

IRQV

JACOBS
FOUNDATION

Our Promise to Youth

BMSLSS by school context and home location

Statistical significant differences

Rural school							
Home Location	Mean	95% Confidence Interval		Contrast of hypothesis			
		Lower	Upper	Contrast value	t	df	Sig.
Rural	8.93	8.88	8.97	8.93	-.139	4	.896
Semi-urban	8.62	8.50	8.74	8.93	-7.273	4	.002
Urban	8.28	7.95	8.61	8.93	-5.516	4	.005

Urban school							
Home Location	Mean	95% Confidence Interval		Contrast of hypothesis			
		Lower	Upper	Contrast value	t	df	Sig.
Rural	9.17	8.94	9.41	8.71	5.437	4	.006
Semi-urban	8.68	8.17	9.19	8.71	-.184	4	.863
Urban	8.71	8.58	8.84	8.71	-.026	4	.980

www.isciweb.org

Universitat de Girona

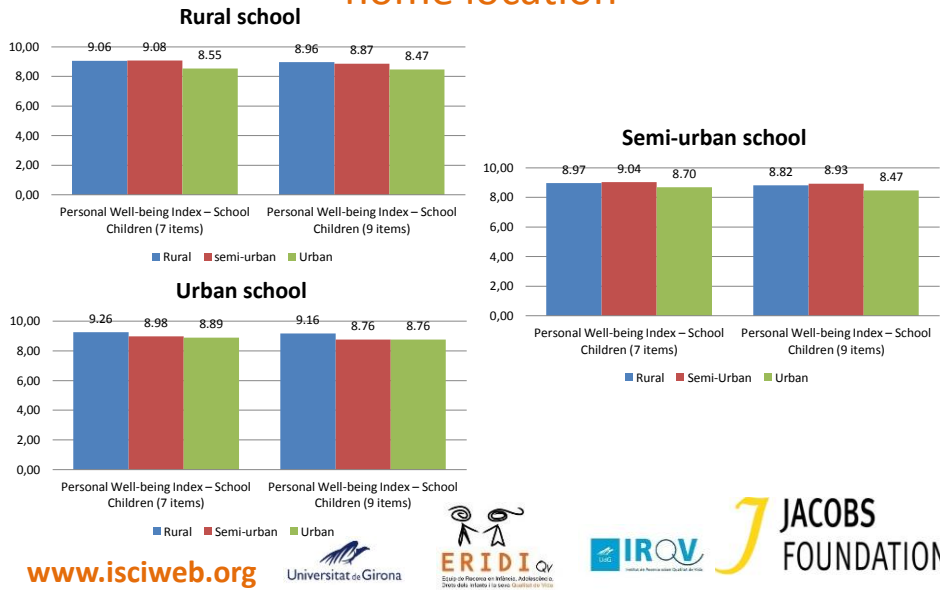
ERIDI QV
Equip de Recerca en Intervenció, Avaluació i Desenvolupament Educatiu i Social

IRQV

JACOBS
FOUNDATION

Our Promise to Youth

PWI-SC7 and PWI-SC9 by school context and home location



PWI-SC7 by school context and home location

■ Statistical significant differences

Rural school

Home Location	Mean	95% Confidence Interval		Contrast of hypothesis			
		Lower	Upper	Contrast value	t	gI	Sig.
Rural	9.06	9.03	9.10	9.06	.002	4	.999
Semi-urban	9.08	9.02	9.13	9.06	.515	4	.634
Urban	8.55	8.28	8.81	9.06	-5.476	4	.005

Urban school

Home Location	Mean	95% Confidence Interval		Contrast of hypothesis			
		Lower	Upper	Contrast value	t	gI	Sig.
Rural	9.26	9.13	9.38	8.89	8.310	4	.001
Semi-urban	8.98	8.57	9.39	8.89	.651	4	.551
Urban	8.89	8.76	9.01	8.89	.000	4	1.000

PWI-SC9 by school context and home location

Statistical significant differences

Rural school							
Home Location	Mean	95% Confidence Interval		Contrast of hypothesis			
		Lower	Upper	Contrast value	t	df	Sig.
Rural	8.96	8.92	9.00	8.96	.002	4	.99
Semi-urban	8.87	8.73	9.00	8.96	-1.90	4	.13
Urban	8.47	8.20	8.75	8.96	-4.88	4	.01

Semi-urban school							
Home Location	Mean	95% Confidence Interval		Contrast of hypothesis			
		Lower	Upper	Contrast value	t	df	Sig.
Rural	8.82	8.56	9.08	8.93	-1.19	4	.29
Semi-urban	8.93	8.81	9.05	8.93	-.002	4	.99
Urban	8.47	8.18	8.77	8.93	-4.29	4	.01

Urban school							
Home Location	Mean	95% Confidence Interval		Contrast of hypothesis			
		Lower	Upper	Contrast value	t	df	Sig.
Rural	9.16	8.93	9.39	8.76	4.92	4	.01
Semi-urban	8.76	8.21	9.31	8.76	.011	4	.99
Urban	8.76	8.60	8.92	8.76	.00	4	1.00

www.isciweb.org

Universitat de Girona

ERIDI Qv
Equip de Recerca en Infància, Adolescència i Joves dels IRIQV i de les Universitats de Girona

IRQV

JACOBS
FOUNDATION

Our Promise to Youth

Distribution of the sample by school context and home location (number of cases) (8, 10 & 12 year-olds)

		HOME LOCATION			TOTAL
		RURAL	SEMI-URBAN	URBAN	
SCHOOL CONTEXT	RURAL	353	65	22	440
	SEMI-URBAN	146	621	41	808
	URBAN	47	70	2,451	2,568
TOTAL		546	756	2,514	3,816

www.isciweb.org

Universitat de Girona

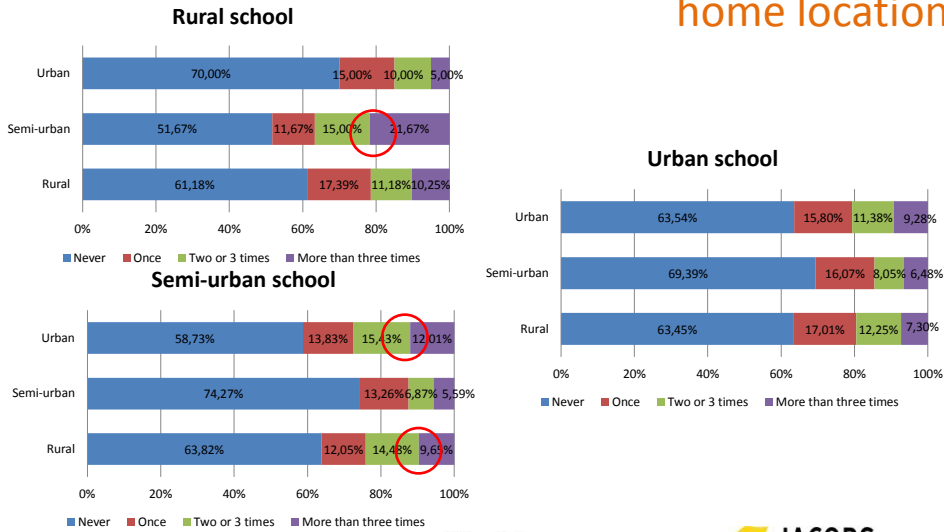
ERIDI Qv
Equip de Recerca en Infància, Adolescència i Joves dels IRIQV i de les Universitats de Girona

IRQV

JACOBS
FOUNDATION

Our Promise to Youth

Hit by others by school context and home location

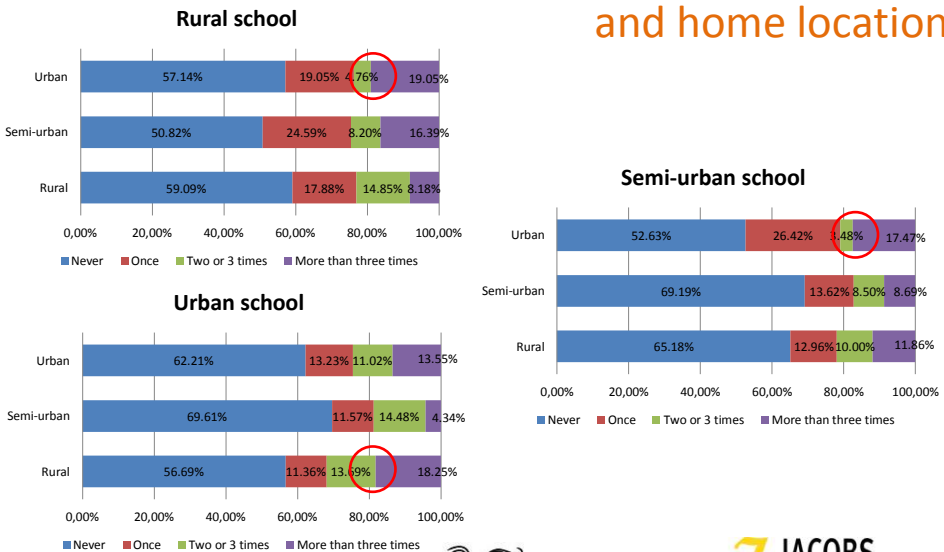


www.isciweb.org



Our Promise to Youth

Left out by others by school context and home location



www.isciweb.org



Our Promise to Youth

How often hit by other children in your school by school context and home location

Statistical significant differences

Rural school

Home location	Mean	95% Confidence Interval		Contrast of hypothesis			
		Lower	Upper	Contrast Value	t	df	Sig.
Rural	0.72	0.63	0.81	0.72	.037	4	.972
Semi-urban	0.90	0.80	1.00	0.72	5.157	4	.007
Urban	0.86	0.70	1.02	0.72	2.359	4	.078

Urban school

Home location	Mean	95% Confidence Interval		Contrast of hypothesis			
		Lower	Upper	Contrast Value	T	df	Sig.
Rural	0.94	0.21	1.66	0.76	.674	4	.537
Semi-urban	0.54	0.33	0.74	0.76	-3.095	4	.036
Urban	0.76	0.63	0.89	0.76	-.020	4	.985

www.isciweb.org

Universitat de Girona



JACOBS FOUNDATION

Our Promise to Youth

How often left out by other children by school context and home location

Statistical significant differences

Rural school

Home location	Mean	95% Confidence Interval		Contrast of hypothesis			
		Lower	Upper	Contrast Value	t	df	Sig.
Rural	0.71	0.63	0.79	0.71	-.126	4	.906
Semi-urban	1.07	0.97	1.16	0.71	10.073	4	.001
Urban	0.62	0.52	0.72	0.71	-2.451	4	.070

Semi-urban school

Home location	Mean	95% Confidence Interval		Contrast of hypothesis			
		Lower	Upper	Contrast Value	t	df	Sig.
Rural	0.694	0.494	0.894	0.450	3.386	4.000	.028
Semi-urban	0.448	0.399	0.497	0.450	-0.106	4.000	.921
Urban	0.807	0.142	1.472	0.450	1.491	4.000	.210

Urban school

Home location	Mean	95% Confidence Interval		Contrast of hypothesis			
		Lower	Upper	Contrast Value	t	df	Sig.
Rural	0.72	0.59	0.86	0.66	1.248	4	.280
Semi-urban	0.50	0.42	0.58	0.66	-5.387	4	.006
Urban	0.66	0.60	0.73	0.66	.200	4	.851

www.isciweb.org

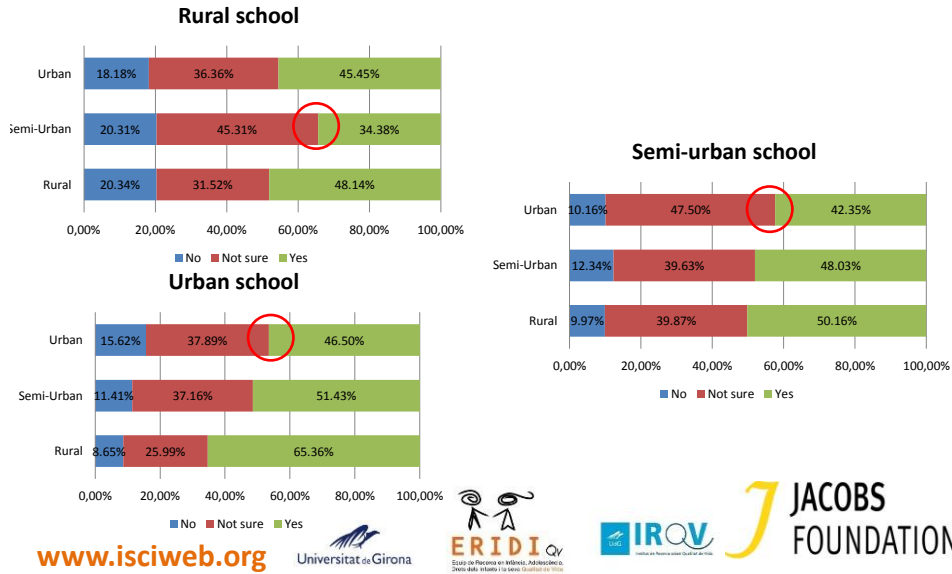
Universitat de Girona



JACOBS FOUNDATION

Our Promise to Youth

Knowing children's rights by school context and home location (I)

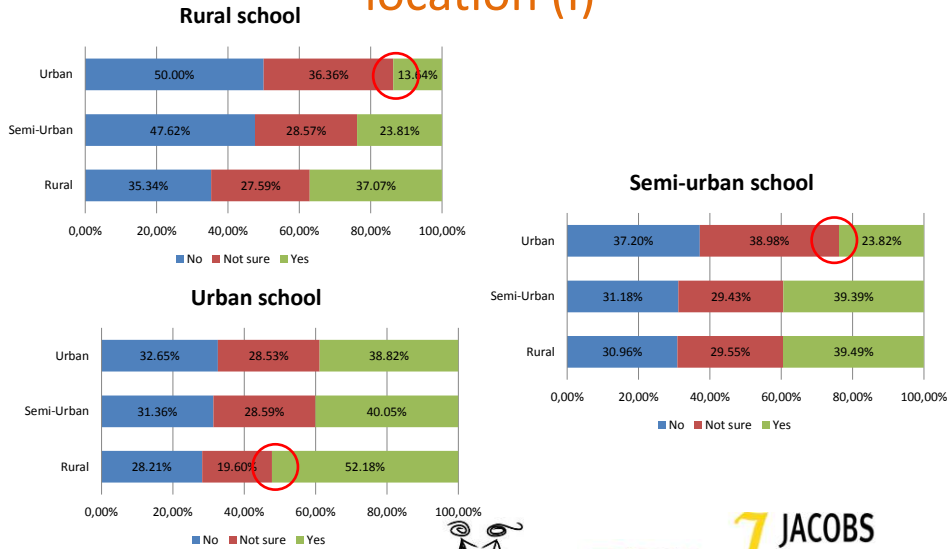


I know what rights children have by school context and home location (II)

■ Statistical significant differences

		Mean	95% Confidence interval		Unweight count	
			Lower	Upper		
Rural school						
Home location						
	Rural	No	20.34%	18.52%	22.30%	71
		Not sure	31.52%	30.32%	32.74%	110
	Yes	48.14%	46.65%	49.63%	168	
Semi-urban	No	20.31%	17.83%	23.04%	13	
	Not sure	45.31%	42.31%	48.35%	29	
	Yes	34.38%	30.88%	38.05%	22	
Urban	No	18.18%	13.20%	24.51%	4	
	Not sure	36.36%	29.68%	43.61%	8	
	Yes	45.45%	39.92%	51.10%	10	

CRC by school context and home location (I)



www.isciweb.org



Our Promise to Youth

I know about the CRC by school context and home location (II)

 Statistical significant differences

Home location		Rural school			Unweight count
		Mean	95% Confidence interval		
			Lower	Upper	
Rural	No	35.34%	33.97%	36.74%	123
	Not sure	27.59%	25.73%	29.53%	96
	Yes	37.07%	35.45%	38.72%	129
Semi-urban	No	47.62%	43.95%	51.32%	30
	Not sure	28.57%	23.36%	34.43%	18
	Yes	23.81%	19.80%	28.35%	15
Urban	No	50.00%	45.19%	54.81%	11
	Not sure	36.36%	29.68%	43.61%	8
	Yes	13.64%	9.28%	19.60%	3

www.isciweb.org



Our Promise to Youth

I know about the CRC by school context and home location (III)

Statistical significant differences

Semi-urban school					
Home location		Mean	95% Confidence interval		Unweight count
			Lower	Upper	
Rural	No	30.96%	26.11%	36.26%	45
	Not sure	29.55%	25.42%	34.05%	44
	Yes	39.49%	31.83%	47.70%	57
Semi-urban	No	31.18%	23.20%	40.47%	196
	Not sure	29.43%	26.24%	32.84%	172
	Yes	39.39%	33.37%	45.74%	227
Urban	No	37.20%	21.02%	56.86%	14
	Not sure	38.98%	34.19%	44.00%	16
	Yes	23.82%	9.90%	47.09%	11

www.isciweb.org



I know about the CRC by school context and home location (IV)

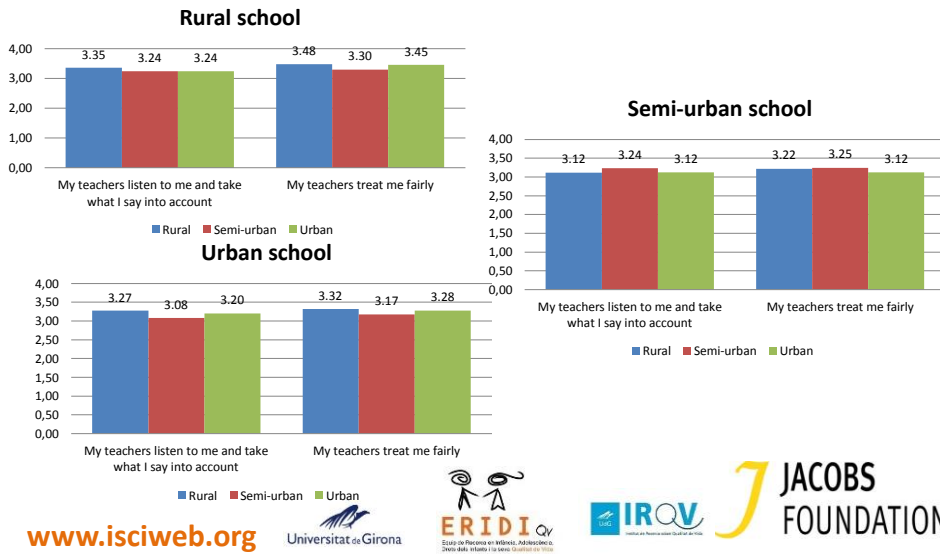
Statistical significant differences

Urban school					
Home location		Mean	95% Confidence interval		Unweight count
			Lower	Upper	
Rural	No	28.21%	18.13%	41.08%	13
	Not sure	19.60%	11.45%	31.50%	9
	Yes	52.18%	46.83%	57.49%	24
Semi-urban	No	31.36%	18.51%	47.90%	22
	Not sure	28.59%	21.45%	36.99%	20
	Yes	40.05%	28.57%	52.73%	28
Urban	No	32.65%	30.09%	35.32%	780
	Not sure	28.53%	26.23%	30.95%	681
	Yes	38.82%	37.47%	40.19%	927

www.isciweb.org



Teachers listen & treat me fairly by school context and home location (I)



Teachers listen & treat me fairly by school context and home location (II)

Statistical significant differences

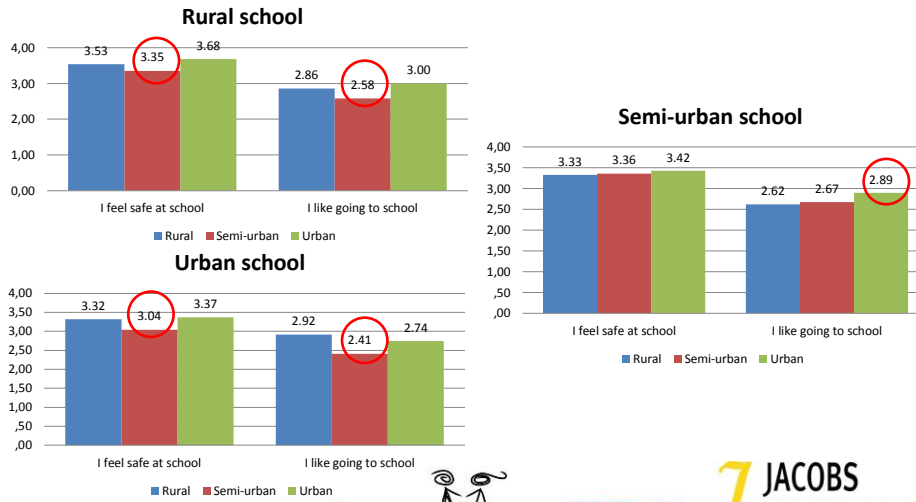
My teachers listen to me and take what I say into account

Rural school							
Home location	Mean	95% Confidence Interval		Contrast of hypothesis			
		Lower	Upper	Contrast Value	t	df	Sig.
Rural	3.35	3.32	3.39	3.35	-0.001	4	.999
Semi-urban	3.24	3.20	3.28	3.35	-8.080	4	.001
Urban	3.24	3.12	3.35	3.35	-2.756	4	.051

My teachers treat me fairly

Rural school							
Home location	Mean	95% Confidence Interval		Contrast of hypothesis			
		Lower	Upper	Contrast Value	t	df	Sig.
Rural	3.48	3.44	3.52	3.48	-0.003	4	.998
Semi-urban	3.30	3.19	3.40	3.48	-5.101	4	.007
Urban	3.45	3.36	3.54	3.48	-0.856	4	.440

Feel safe at school & like going to school by school context and home location (I)



www.isciweb.org

Universitat de Girona

